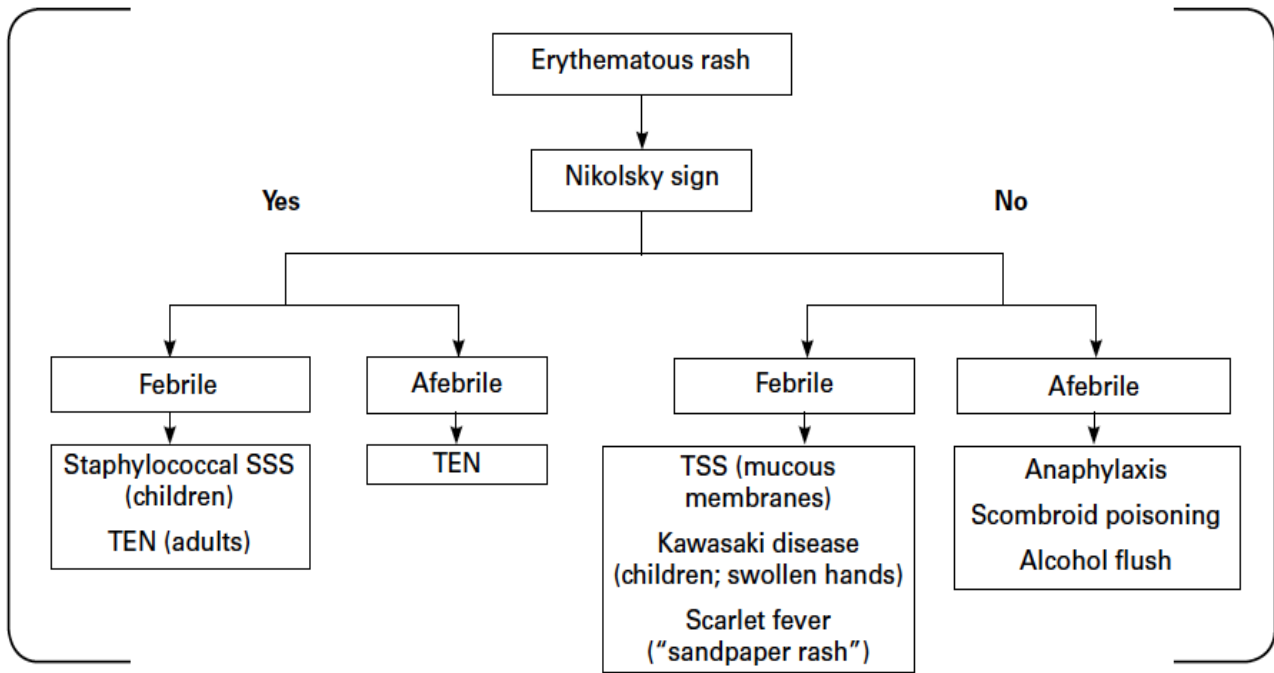


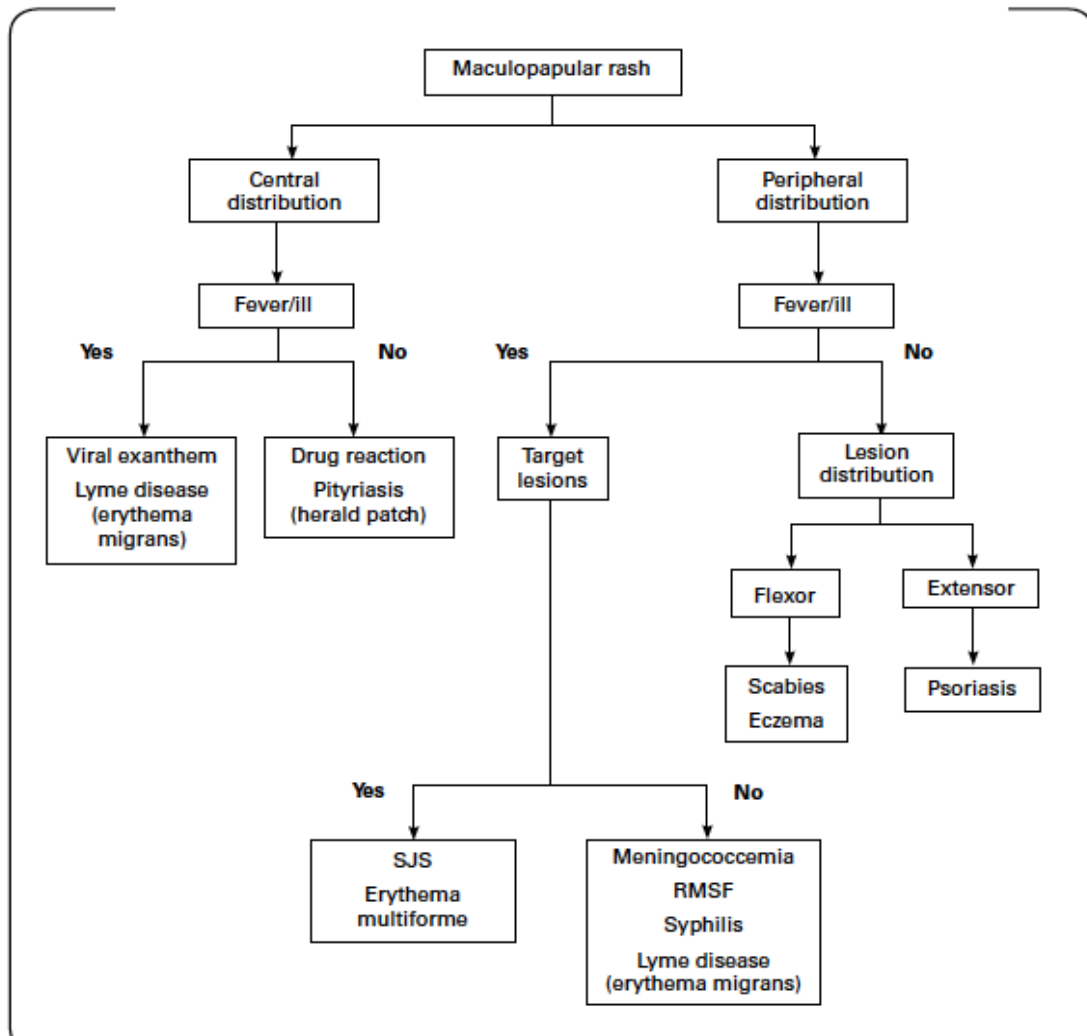
## Approach to Rashes

**FIGURE 2. Diagnosis of the Erythematous Rash**

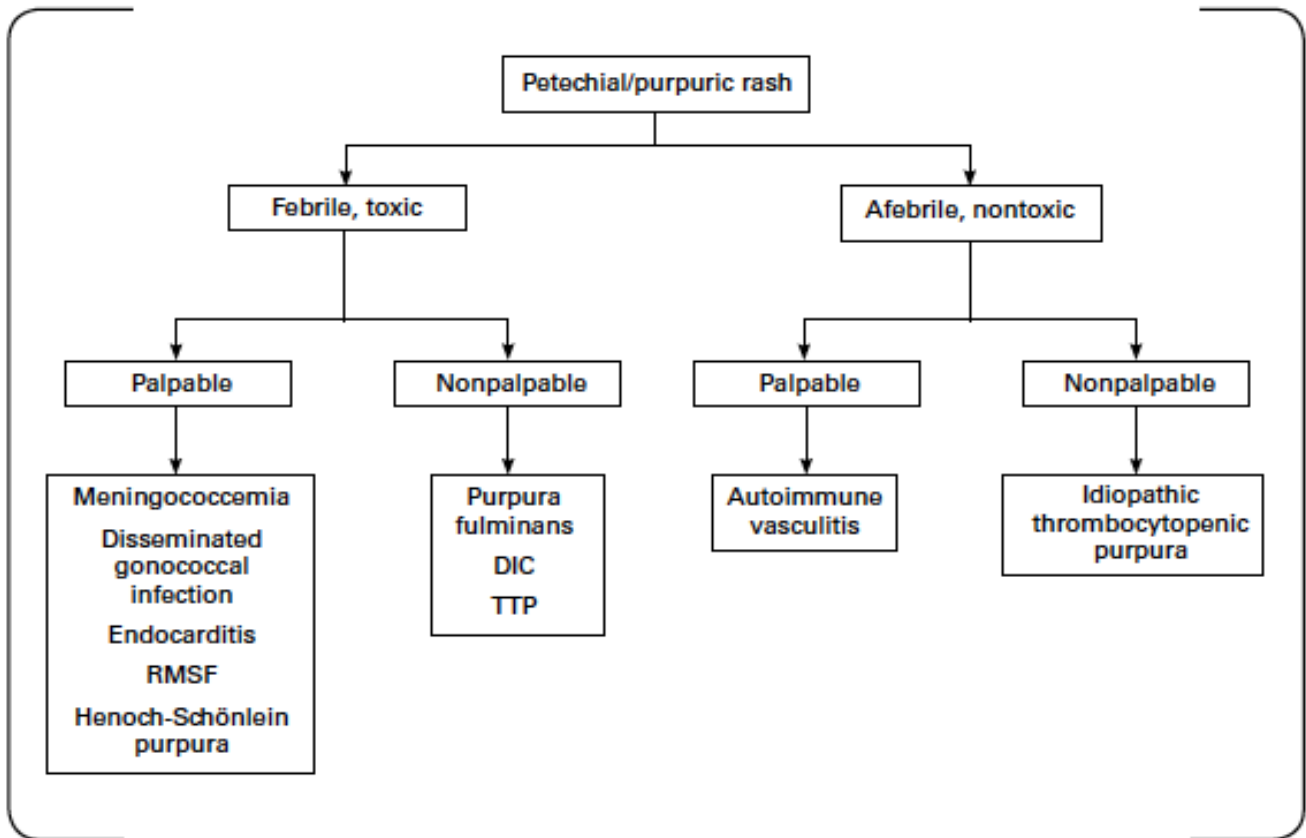


SSS = scalded skin syndrome; TEN = toxic epidermal necrolysis; TSS = toxic shock syndrome.

**FIGURE 3. Diagnosis of the Maculopapular Rash**



**FIGURE 4. Diagnosis of the Petechial/Purpuric Rash**



RMSF = Rocky Mountain spotted fever; DIC = disseminated intravascular coagulopathy; TTP = thrombotic thrombocytopenic purpura.

**FIGURE 5. Diagnosis of the Vesiculobullous Rash**

