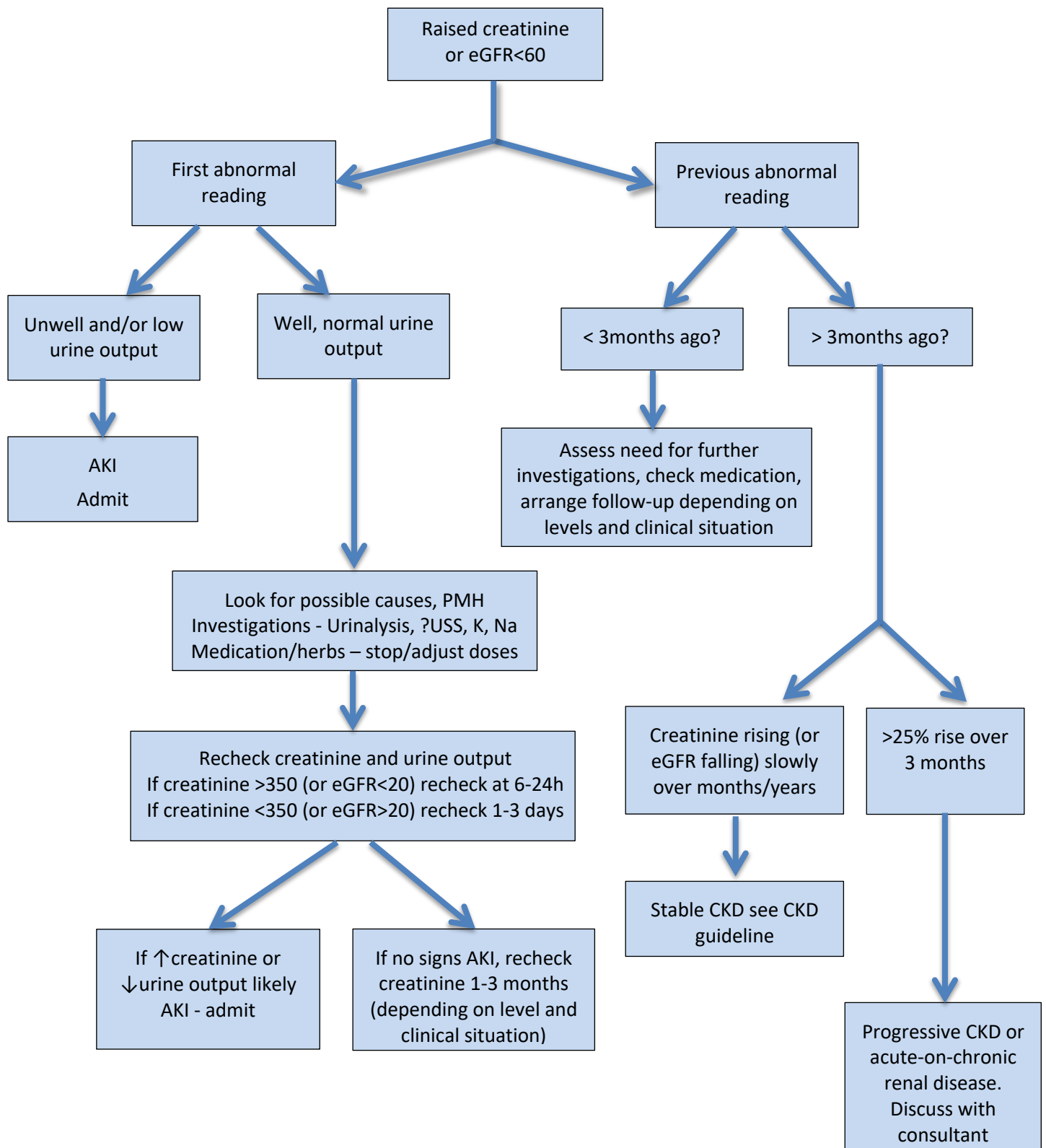


## Raised creatinine



### References:

Consultation with Dr Joe Watlington, visiting nephrologist February 2022; NICE NG203, 2021  
2019 Clinical Guide Primary Care International (adapted for this context and location. PCI have not been involved in, nor hold responsibility for any adaptations. Original can be found by contacting PCI: <https://pci-360.com>)